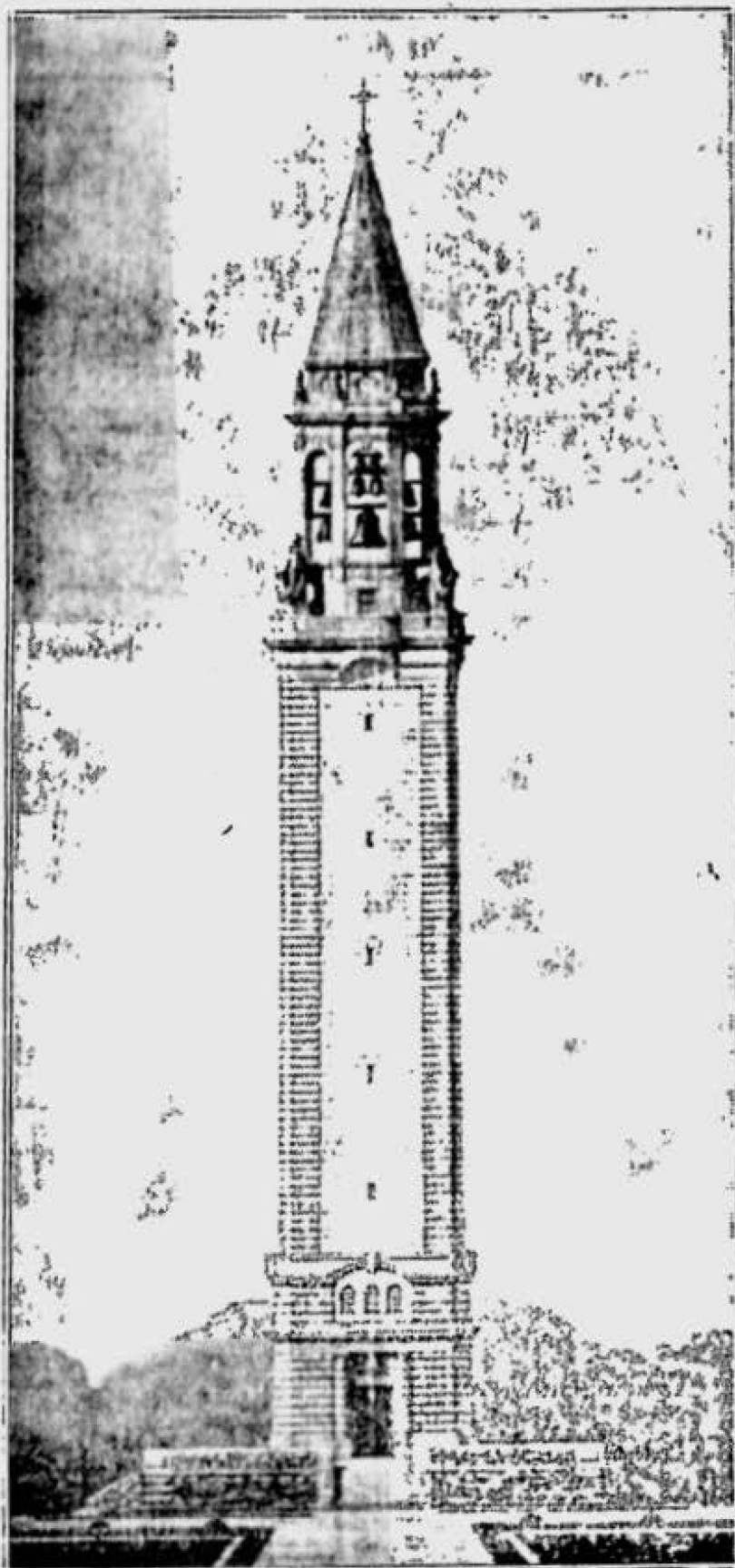


# Nemours Carillon Tower Is Nearing Completion



One of the outstanding events of this city, State and nation will be the dedicatory ceremonies in connection with the construction of the carillon tower erected by Alfred I. du Pont on his late estate at Nemours. The ceremony will not take place until late in the spring, the date having not been fixed.

At present all of the outside work on the tower has been completed but it will require at least two months more before all of the interior wiring is finished. When completed the tower will rise to a height of 210 feet. The steel scaffolding used in the tower's erection which was also used in the renovation of the Washington monument the past year, is being removed, but not until more spring-like weather arrives will it be possible to finish the landscape work so necessary to such a structure.

Alfred V. du Pont, of the architectural firm of Massena and du Pont, and a son of the late Delawarean, who has been in active control and direction of the work, states it is the largest reinforced concrete tower in the world. In a crypt beneath the tower, at the left will lie the body of Alfred I. du Pont, whose death occurred in Florida last spring.

The engineering and architectural problems involved in such a structure have required great thought and consideration, special tubular steel scaffolding being required in its erection. The tower, a memorial to the parents of the late Alfred I. du Pont, will be the highest observation point in Delaware. It will contain a 31-bell carillon, which have been successfully cast.

The parents of Alfred I. du Pont were Eleuthere Irenee du Pont (1829-1877) and Charlotte Shepard Henderson du Pont (1835-1877).

The firm of Garrett, Miller and Company, Fourth and Orange streets, were the electrical contractors, and will complete this portion of the work within the next two months.

The electrical equipment of the carillon tower is quite extensive. High tension current is brought in under ground to a transformer room with four large transformers with a total capacity of 95 KVA. One of

these is used for the operation of an elevator running from the crypt to the observation platform just under the bell chamber.

Another one supplies the 24 floodlights which are to be mounted around the terrace wall for lighting all sides of the tower. These floodlights range from 500 to 1500 watts and are controlled through magnetic switches from the first floor of the tower.

The crypt, entrance lobby and music room are electrically heated by specially designed heaters set flush in the wall behind bronze grilles. Each room is automatically controlled by thermostats and separately controlled by switches on the first floor.

The fourth transformer is for all general lighting, ventilating fans, airplane beacon lights and the operation of the bells themselves. With the exception of this latter transformer, any of the others may be cut into or out of service by means of push buttons in the first floor which operate magnetic remote control switches on the high tension switchboard.

The airplane beacon lights near the top of the tower are of special design and arranged with spare lamps connected through relays so that if a lamp burns out, another is automatically thrown into service, a small tell-tale in the first floor showing when this has happened. They are automatically turned off and on each night and morning by astronomical time clock so designed that it automatically follows the changing hours of sunset and sunrise.

The more than 5,000 feet of electrical conduit is composed of a special copper alloy to prevent deterioration and contains more than 23,000 feet of wire.

The 37 bells will be played from a console in the music room and when a carillonier is not present they may

healthful nourishing food to keep fit. Most housewives buy the best food their budget will allow. They do not purchase wilted vegetables and discolored meats, just to save a few pennies. Yet is their food is not properly protected after it comes into the home, the money spent for good food is wasted. Kelvinator refrigeration enables them to buy more economically, in larger quantities at lower cost. This food savings will soon pay for a Kelvinator and is one of the reasons why owning a Kelvinator in the winter time is a real necessity.

be played automatically from a music roll. A large electric clock will play the Westminster chimes at quarter hour periods and will be fitted with an automatic mechanical silencer to cut out the quarter hours when desired or at times when a concert is being given on the bells.

The lighting fixtures are all of special design, and are made of bronze. The lighting in the crypts is totally indirect from bronze wall pockets.

## Geo. W. McCaulley & Son, INC.

Art and Quality  
TILE, TERRAZZO  
MARBLE AND SLATE WORK  
ELECTRIC FIXTURES  
ELECTRICAL CONTRACTORS  
Telephone 7629. 103 W. 8th St.

## J. Elmer Betty & Sons

Flowers Always Fresh

407 DELAWARE AVENUE

Telephones 7339, 2-6122

## William N. Cann, Inc.

Printing, Advertising, Paper Binding,  
Book Binding, Mimeographing, Multi-  
graphing and Mailing Service

1612-14 Delaware Ave.

Tele. 8155-8156

## Frank H. Escott

Plumbing and Heating  
827 ORANGE STREET

Plal 7023

Wm. N. Cann, Inc.